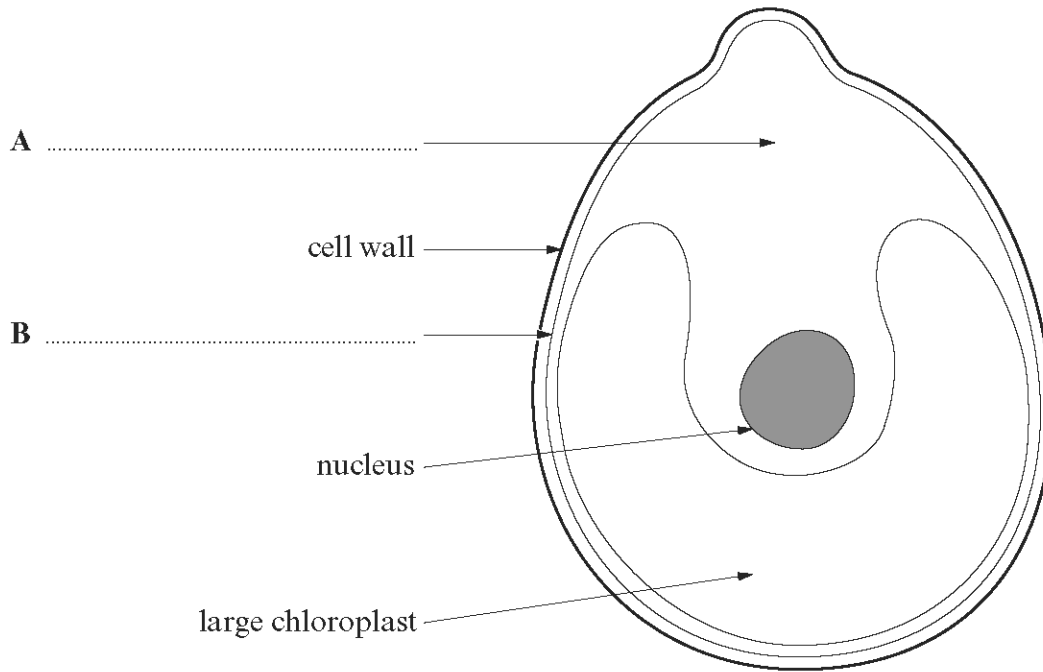


WJEC (Eduqas) Biology GCSE  
1.1 Prokaryotic and Eukaryotic  
Cells  
Questions by Topic

1. The diagram below shows an algal cell.



(a) Complete labels **A** and **B** on the diagram above. [2]

(b) (i) Complete the table. [3]

Part of algal cell	Function
nucleus	.....
.....	photosynthesis
cell wall	.....

(ii) I. Name **one** part of the algal cell, shown in the diagram above which is **not** present in an animal cell. [1]

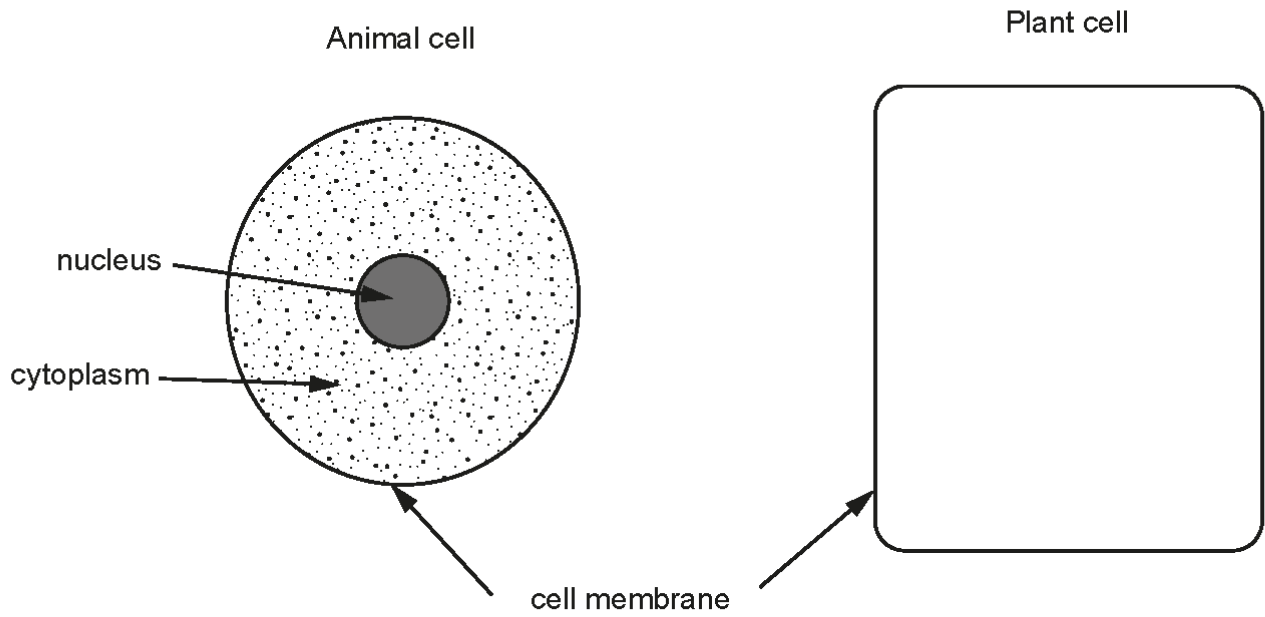
.....

II. Name **one** part of the algal cell, shown in the diagram above which is **not** present in a bacterial cell. [1]

.....

2.

- (a) (i) The diagrams below show an animal cell and the cell membrane of a plant cell. Complete the drawing of the plant cell. *No labels are required.* [2]



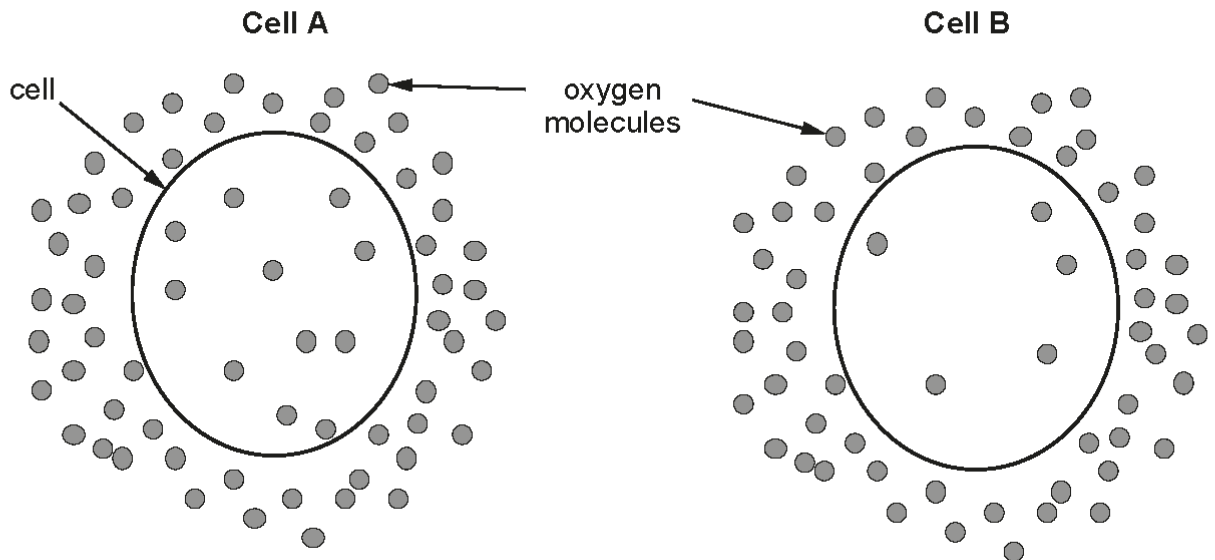
- (ii) State the function of the cell membrane.

[1]

.....

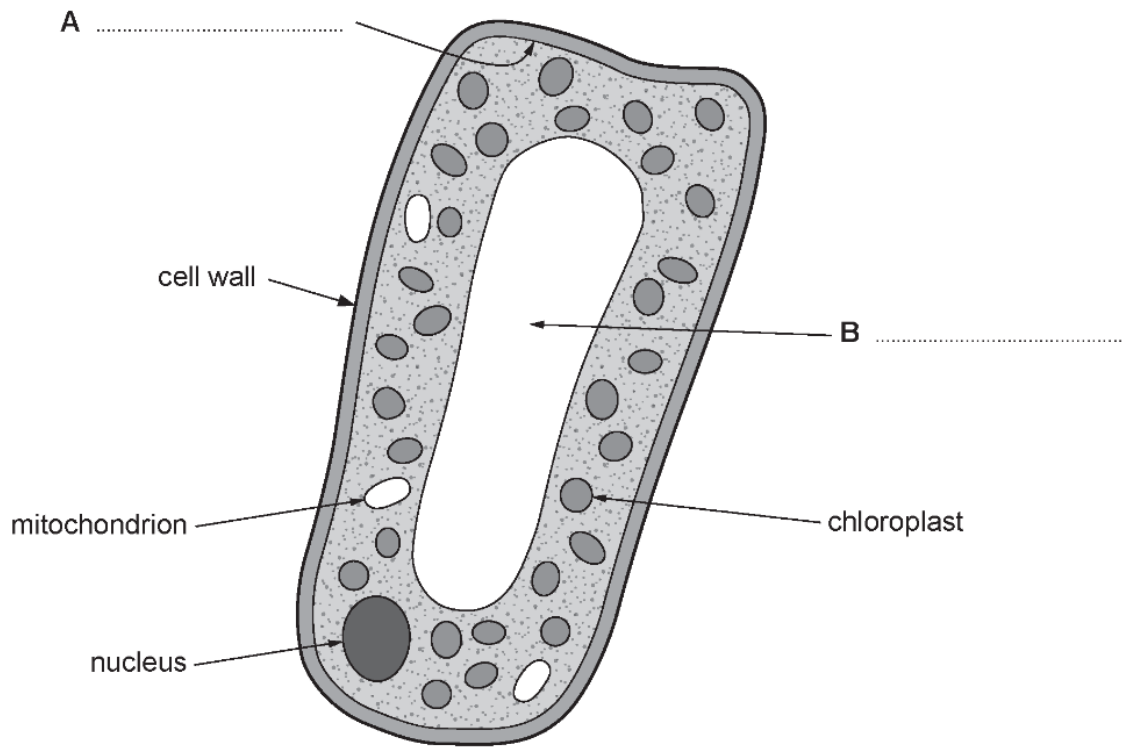
.....

- (b) The diagrams below show two cells which are carrying out respiration. Oxygen molecules are shown inside and outside both cells.



3.

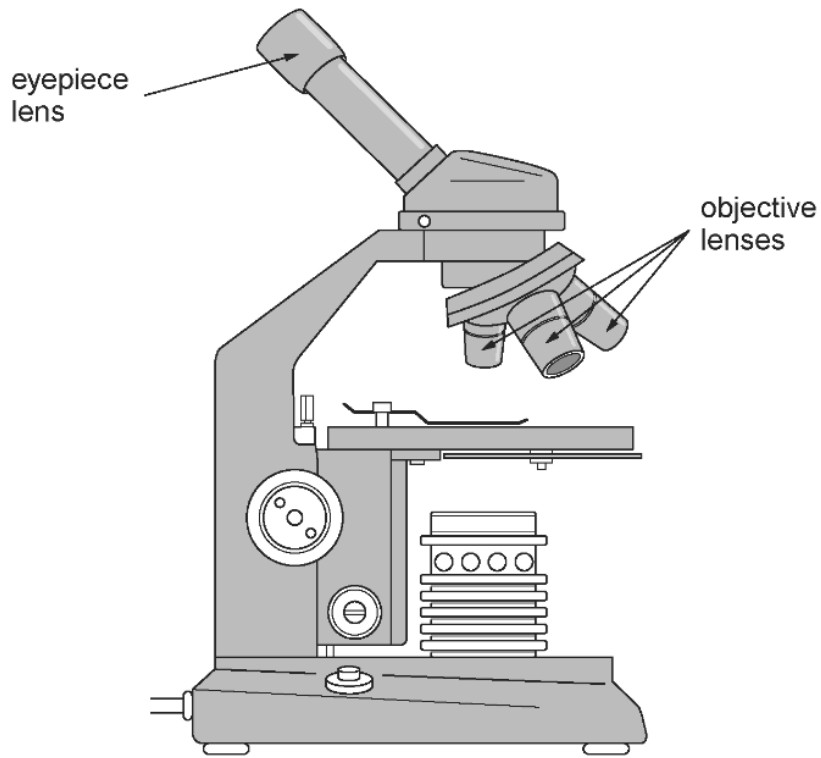
The diagram below shows a section through a plant cell as seen with a light microscope.



- (a) (i) Label parts **A** and **B** on the diagram. [2]  
 (ii) Complete the table below. [3]

Part of cell	Function	Cell part present (✓) or absent (×) in animal cell
.....	photosynthesis	.....
mitochondrion	.....	✓
.....	contains the chromosomes	.....

4. Rhys studies some plant tissue using the instrument shown below.



(a) State the name of the instrument shown in the diagram. [1]

.....

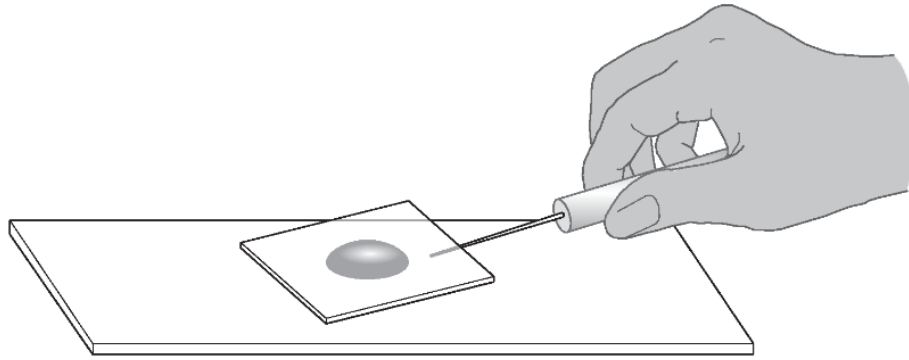
(b) The table shows the magnification of each of the four lenses.

Lens	Magnification
eyepiece lens	$\times 10$
low power objective lens	$\times 4$
medium power objective lens	$\times 10$
high power objective lens	$\times 40$

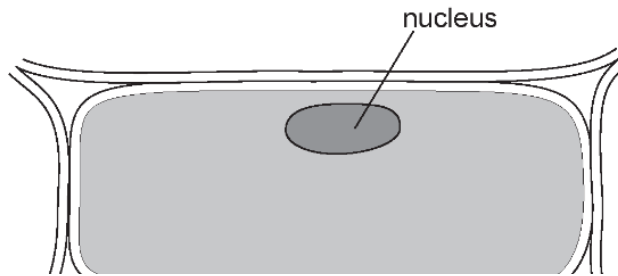
Calculate the maximum magnification that is possible with this instrument. [2]

maximum magnification =  $\times$  .....

Rhys places some of the plant tissue in water on a slide and lowers a cover slip on top as shown below.



He draws one cell from the tissue as seen under the maximum magnification. His drawing is shown below.



structures.

[4]

(d) State the function of the nucleus.

[1]